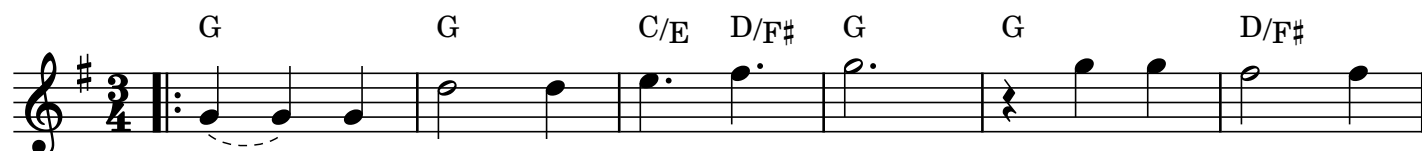
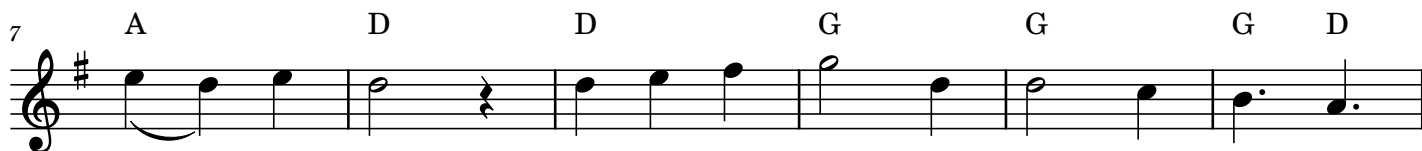


Green

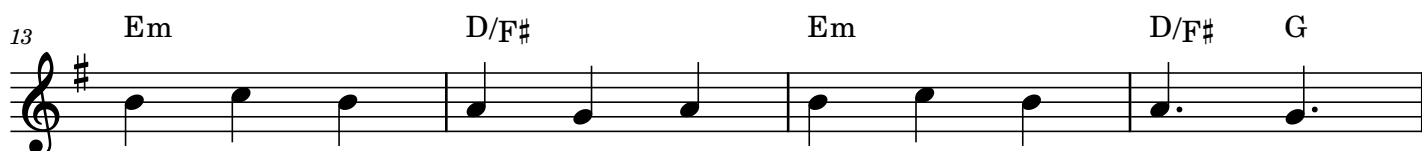
♩ = 156



When win-ter's gray is on the sky, rust u - pon the
Wav-ing de - fi - ant pine tree boughs, ce - dar need - les,
Death may raise its voice to - day; O, but Life will
So keep it in your win - ter store, hang its gar - land



leaves that lie, red on the last few ber - ries cling - ing,
stub-born and proud, hid - ing in - side the seeds of sum - mer,
have its say, speak-ing in lov - ers and in chil - dren,
'round the door, grant to your heart its hope - ful prom - ise,

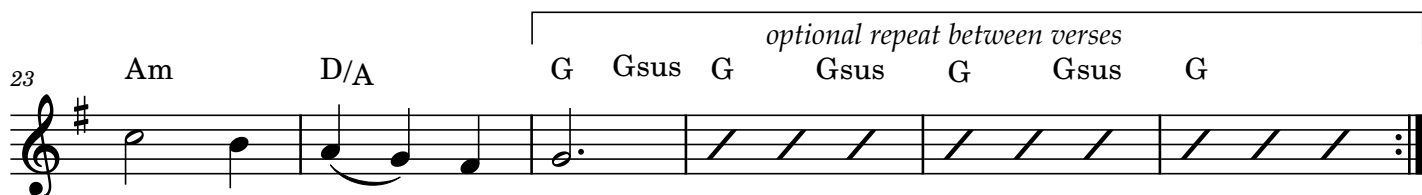


brown on the branch where the bit - ter wind's sing - ing—
deep in the root where it sleeps un - der cov - er—
in po - ets' pens and phil - os - o - phers' vis - ions.
fash - ion a wreath for its bles - sing up - on us.

Intro begins here



E - ven when white ob - scures the scene, still, in
Pa - tient - ly wait - ing there un - seen, in the
Life is a plan - et's dar - ing dream: Earth's de -
Win - ter brings browns and grays in - deed; but when it



win - ter, there is green.
win - ter, there is green.
-vo - tion, spo - ken in green.
comes, re - mem - ber green.

Arrangement Permissions

👉 One-time Adaptation

👍 New Arrangement OK

🚫 Seek-permission-to-arrange

Look at the *Sing Out Love* "Permissions" section for further explanation